



GRAND EFFECTS®

FIRE & WATER ELEMENTS

2025  
PRODUCT BROCHURE





# GRAND EFFECTS®

FIRE & WATER ELEMENTS

Handcrafted Products 4

Colors & Finishes 6

## FIRE

Fire Bowls 8

Fire & Water Bowls 14

Fire Tables 16

Burners 20

Fire Accents 22

Decorative Media & Accessories 24

## WATER

Water Bowls 26

Scuppers 28

Waterfalls 30

Custom Projects 32

Terms & Conditions 34

# DESIGNED TO INSPIRE



ESSEX FIRE BOWLS IN EBONY

## EXCEPTIONAL BACKYARDS BEGIN WITH EXTRAORDINARY EFFECTS

Grand Effects® transforms ordinary pools and landscapes into the extraordinary with beautifully handcrafted fire and water elements that create excitement and a rich luxurious ambiance to backyard designs. Available in a variety of sizes, shapes, materials and finishes to reflect any style — each exquisite fire, water or combination fire & water element will elevate your outdoor space and provide long lasting enjoyment, whether entertaining or creating life-long memories with the family.

Visit our website to discover  
the full line of products

[GrandEffects.com](https://www.GrandEffects.com)



# HANDCRAFTED PRODUCTS



Grand Effects® merges traditional craftsmanship with advanced technologies to bring you the highest quality products available. Professional artisans design and manipulate structures made of heavy-duty copper, steel, aluminum, and concrete. Meanwhile, state-of-the-art machinery precision builds our CSA certified burners and stamps designer water features.

You won't find another brand like Grand Effects.

Find Your Element™



## ARTISAN CRAFTED

Each product is meticulously constructed and assembled by a team of craftsmen



## MADE TO LAST

Constructed with high quality materials



## AESTHETIC DESIGNS

Expansive selection of styles and designs



# COLORS & FINISHES

## INTEGRALLY COLORED PREMIUM CONCRETE\*

Hand-fabricated using glass fiber reinforced concrete for enhanced durability, each bowl is integrally colored, from the inside out, offering consistent tones throughout.



Ebony



Dark Walnut



Charcoal Grey



Stone Grey



Natural



\*Concrete products will contain subtle variations. Some natural imperfections and color differences are to be expected. Color samples available upon request.



LEGACY FIRE & WATER BOWL IN NATURAL

## POWDER-COATED METAL\*\*

Our powder-coated metal bowls are made from the highest quality, heavy-gauge aluminum. Each piece is sandblasted and treated with an anti-corrosion process before they are powder-coated with a vibrant array of color choices for a durable and long-lasting finish.



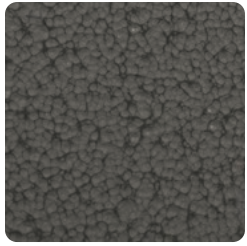
Black



Bronze



Chestnut Hammertone



Grey Hammertone

## COPPER & STAINLESS STEEL\*\*

Choose from our exquisite brushed copper, hammered copper, or stainless-steel options. Each piece is meticulously crafted with unwavering precision, showcasing an exquisite fusion of artistry and elegance surpassing all expectations.



Brushed Copper



Oil-Rubbed Hammered Copper



Stainless Steel

\*\*Finishes and colors may vary. Color samples available upon request.

# FIRE BOWLS

Bring your backyard to life with enthralling flames that dance and flicker in the night. Add excitement and allure to any pool and landscape design with a stylish fire bowl of your choosing.



**AUTOMATION  
READY**  
See page 18.

## PREMIUM CONCRETE FIRE BOWLS

The perfect blend of elegance and durability, Grand Effects® Concrete Fire Bowls are hand-fabricated using glass fiber reinforced concrete for enhanced durability. Available in five fade-resistant colors, each bowl undergoes a unique coloration process where pigments are integrally mixed into the concrete thoroughly — from the inside out — offering consistent tones throughout so any wear will reveal the same color underneath.



### CORINTHIAN

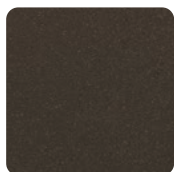
SHOWN IN CONCRETE DARK WALNUT

30" x 30" Sq. x 10" H x 16.25" B | 36" x 36" Sq. x 12" H x 19.25" B

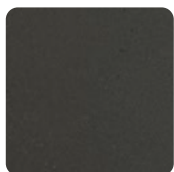
### FINISH COLORS



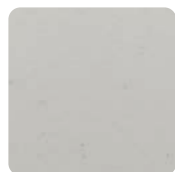
Ebony



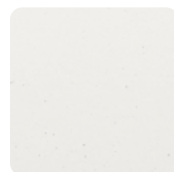
Dark  
Walnut



Charcoal  
Grey



Stone  
Grey



Natural





ESSEX FIRE BOWL IN EBONY

# BUILD YOUR FIRE BOWL



Choose Your Style and Finish Color



## ESSEX

SHOWN IN EBONY

30" OD x 11" H x 10" B | 36" OD x 14" H x 11.6" B



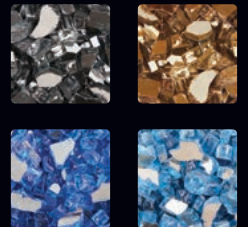
Choose Your Burner  
See Page 20



## LEGACY

SHOWN IN NATURAL

30" OD x 11" H x 15" B | 36" OD x 14" H x 17" B



Choose Fire Media  
See Page 24



Choose Accessories  
See Page 25

# FIRE BOWLS

## METAL FIRE BOWLS

Our Metal Fire Bowls are made from high-quality stainless steel, copper and aluminum. For a rich array of added color choices, powder-coated options pre-treated with an anti-corrosion process are available.



**AUTOMATION  
READY**  
See page 18.



### CORINTHIAN

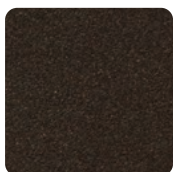
SHOWN IN CHESTNUT HAMMERTONE

24" x 24" Sq. x 8" H x 12" B | 30" x 30" Sq. x 13" H x 15" B | 36" x 36" Sq. x 17" H x 18" B

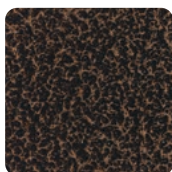
## FINISH COLORS



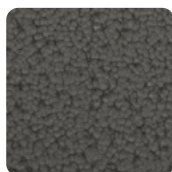
Black  
Powder-Coated  
Metal



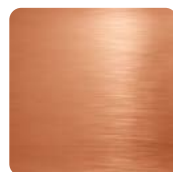
Bronze  
Powder-Coated  
Metal



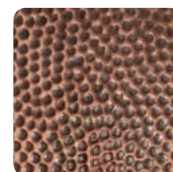
Chestnut  
Hammertone  
Powder-Coated  
Metal



Grey  
Hammertone  
Powder-Coated  
Metal



Brushed  
Copper



Oil-Rubbed  
Hammered  
Copper



Stainless  
Steel



ESSEX FIRE BOWLS IN STAINLESS STEEL



## ESSEX

SHOWN IN BRUSHED COPPER

24" OD x 8" H x 12" B | 30" OD x 13" H x 15" B | 36" OD x 17" H x 18" B

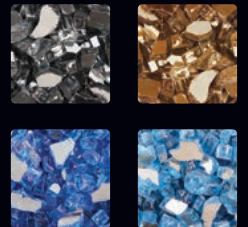
# BUILD YOUR FIRE BOWL



Choose Your Style and Finish Color



Choose Your Burner  
See Page 20



Choose Fire Media  
See Page 24



Choose Accessories  
See Page 25



# FIRE & WATER BOWLS

Bring the elements of fire and water together in one alluring feature for an enchanting effect.

• 15 GPM Water Flow



**AUTOMATION  
READY**  
See page 18.

## PREMIUM CONCRETE FIRE & WATER BOWLS

The perfect blend of elegance and durability, Grand Effects® Concrete Fire & Water Bowls are hand-fabricated using glass fiber reinforced concrete for enhanced durability. Available in five fade-resistant colors, each bowl undergoes a unique coloration process where pigments are integrally mixed into the concrete thoroughly — from the inside out — offering consistent tones throughout so any wear will reveal the same color underneath.



### CORINTHIAN

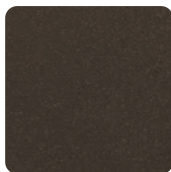
SHOWN IN EBONY

30" x 30" Sq. x 10" H x 16.25" B | 36" x 36" Sq. x 12" H x 19.25" B

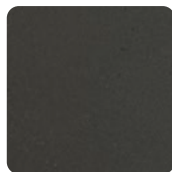
### FINISH COLORS



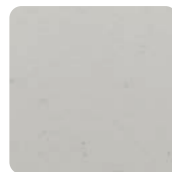
Ebony



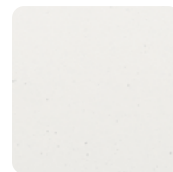
Dark  
Walnut



Charcoal  
Grey



Stone  
Grey



Natural



ESSEX FIRE & WATER BOWL IN STONE GREY

# BUILD YOUR FIRE & WATER BOWL



Choose Your Style and Finish Color



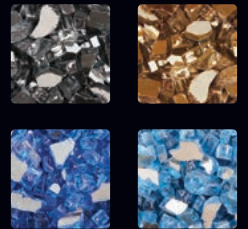
## ESSEX

SHOWN IN STONE GREY

30" OD x 11" H x 10" B | 36" OD x 14" H x 11.6" B



Choose Your Burner  
See Page 20



Choose Fire Media  
See Page 24



## LEGACY

SHOWN IN NATURAL

30" OD x 11" H x 15" B | 36" OD x 14" H x 17" B



Choose Accessories  
See Page 25

# FIRE & WATER BOWLS

## METAL FIRE & WATER BOWLS

With two series in multiple lip styles, find the perfect complement to any pool architecture.



**AUTOMATION  
READY**  
See page 18.

• 15 GPM Water Flow

### BUILDER SERIES

Builder Series bowls combine fire bowls with an integrated scupper. In this design the burner and media sit in the top of the bowl. Water flows out of the scupper's extended lip.



#### CORINTHIAN

SHOWN IN BRUSHED COPPER

30" x 30" Sq. x 13" H x 15" B  
36" x 36" Sq. x 17" H x 18" B



#### ESSEX

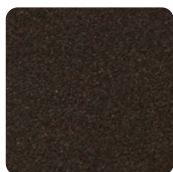
SHOWN IN GREY HAMMERTONE

30" OD x 13" H x 15" B  
36" OD x 17" H x 18" B

### FINISH COLORS



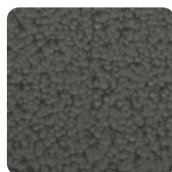
Black  
Powder-Coated  
Metal



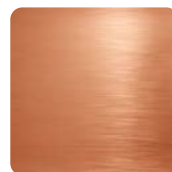
Bronze  
Powder-Coated  
Metal



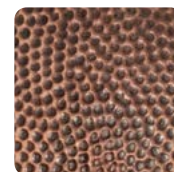
Chestnut  
Hammertone  
Powder-Coated  
Metal



Grey  
Hammertone  
Powder-Coated  
Metal



Brushed  
Copper



Oil-Rubbed  
Hammered  
Copper



Stainless  
Steel  
Not recommended for  
saltwater pools





CORINTHIAN ARTISAN SERIES SEAMLESS LIP  
FIRE & WATER BOWLS IN BRUSHED COPPER

# BUILD YOUR FIRE & WATER BOWL

## ARTISAN SERIES

The original combination of water and fire is really two bowls in one! A center bowl contains the burner and media. This sits inside of the larger, outer bowl. Water flows completely around the fire in a "moat" style and then flows out over the seamless or extended lip.



Choose Your Style  
and Finish Color

### SEAMLESS LIP SHOWN IN BRUSHED COPPER



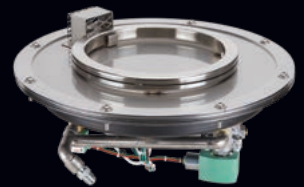
#### CORINTHIAN

30" x 30" Sq. x 13" H x 15" B  
36" x 36" Sq. x 17" H x 18" B

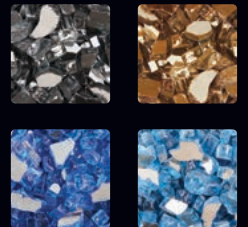


#### ESSEX

30" OD x 13" H x 15" B  
36" OD x 17" H x 18" B



Choose Your Burner  
See Page 20



Choose Fire Media  
See Page 24



### EXTENDED LIP

SHOWN IN OIL-RUBBED  
HAMMERED COPPER



Choose Accessories  
See Page 25

# FIRE TABLES

Create an inviting backyard with a fire table as your centerpiece. Fiery focal points provide a warm backdrop, making them the ideal gathering place for friendly get-togethers and cozy conversations.



**AUTOMATION  
READY\***  
See page 18.



## GRAND CORINTHIAN

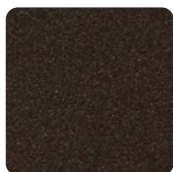
SHOWN IN BLACK

48" x 48" Sq. x 18" H w/ 7" Ledge

## FINISH COLORS



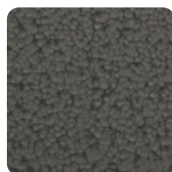
Black  
Powder-Coated  
Metal



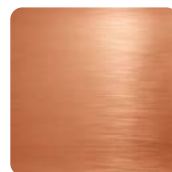
Bronze  
Powder-Coated  
Metal



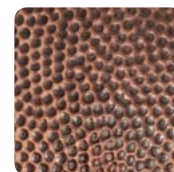
Chestnut  
Hammertone  
Powder-Coated  
Metal



Grey  
Hammertone  
Powder-Coated  
Metal



Brushed  
Copper



Oil-Rubbed  
Hammered  
Copper



Stainless  
Steel

# BUILD YOUR FIRE TABLE



## GRAND ESSEX

SHOWN IN CHESTNUT HAMMERTONE

48" OD x 18" H x 24" B w/ 7" Ledge | 60" OD x 18" H x 30" B w/ 7" Ledge



Choose Your Style and Finish Color



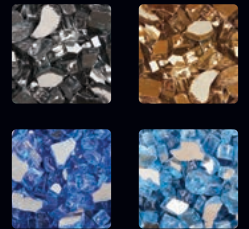
Choose Your Burner  
See Page 20



## LINEAR CORINTHIAN

SHOWN IN GREY HAMMERTONE

60" L x 26" W x 18" H w/ 6" Ledge  
\*Manual Operation not available for Linear Corinthian.



Choose Fire Media  
See Page 24



Choose Accessories  
See Page 25



# BEST BURNERS IN THE BUSINESS

For spectacular designs with fire, your best bet is Grand Effects®. Our premium automated burners provide unmatched flame formation and functionality while our manual burners provide full adjustability with match lit operation.



## PREMIUM AUTOMATED BURNERS



### Automation Ready\*

Grand Effects products work with any home or pool automation system, including Jandy® AquaLink® automation systems. Our technology is reliable, proven and comes as a CSA listed packaged unit, factory tested and easy to install.



### Reliable Operation

Advanced engineering and a compact, insulated design helps keep electronics from overheating, so you can count on dependable performance that keeps the flame burning day-in and day-out.



### Failsafe Flame

Featuring exclusive CSA Certified SmartSense automated technology, all automated burners produce a steadfast flame and utilize advanced flame detection that senses if the flame has gone out, rapidly restarting the burner without you having to lift a finger.

\*Operators must ensure gas fire features are safe to ignite and operate. Fire feature covers, debris, wildlife, and persons must be clear of the equipment when operating.





# BURNERS

Elevate your outdoor space with Grand Effects burners that incorporate full automation or manual operation using our CSA certified proprietary burner system that is factory tested, safe, easy to install and proven to last.

- CSA certified burners are available with SmartSense automated technology or manual operation
- Natural gas or propane
- Easy to Install



## FIRE BOWL | FIRE & WATER BOWL BURNERS

Contained within a stylish bowl of your choosing, our bowl burners add excitement and allure to any pool and landscape design.

TRANSFORMERS ORDERED SEPARATELY FOR AUTOMATED BURNERS. PRE-INSTALLED OR SEPARATE KEY VALVE RECOMMENDED FOR USE WITH MANUAL BURNERS

SIZE	MAX BTU/HR
9" Fire Bowl   Fire & Water Bowl Burner	80,000

\*AVAILABLE IN AUTOMATED OR MANUAL OPERATION



9" Fire Bowl | Fire & Water Bowl Burner (Automated)  
Model 100-9

## FIRE TABLE | FIRE PIT BURNERS

Turn your vision of a warm backyard gathering into reality with a Fire Pit Burner — available in three sizes.

TRANSFORMERS ORDERED SEPARATELY FOR AUTOMATED BURNERS. PRE-INSTALLED OR SEPARATE KEY VALVE RECOMMENDED FOR USE WITH MANUAL BURNERS

SIZE	MAX BTU/HR
18" Fire Pit Burner*	80,000
24" Fire Pit Burner**	185,000 (NG) / 135,000 (P)
30" Fire Pit Burner**	350,000 (NG) / 280,000 (P)

\*AVAILABLE IN AUTOMATED OR MANUAL OPERATION.

\*\*AVAILABLE IN AUTOMATED OPERATION ONLY. INCLUDES A DETACHED SUB PANEL REQUIRED FOR THE SYSTEM. SEPARATELY SOLD ROUND AND SQUARE SUPPORT PLATES ARE NEEDED TO HOLD BURNERS IN SITE BUILT FIRE PITS.



30" Fire Pit Burner\*\*  
Model 200-30



24" Fire Table | Fire Pit Burner\*\*  
Model 200-24



18" Fire Table | Fire Pit Burner\*  
Model 100-18



## LINEAR BURNERS FOR FIRE TABLES AND FIRE PITS

Available with SmartSense automated technology, create a mesmerizing fire backdrop for your outdoor space with the understated splendor of our linear fire burners.

- Easy-to-install assembly ships as a packaged unit
- High-grade stainless-steel construction
- Linear fire pit burners are available in one-foot increments from 3' to 10'
- Custom lengths and shapes also available for linear fire pit burners

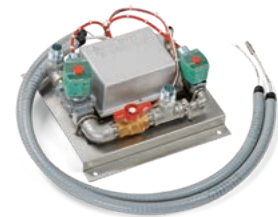
TRANSFORMERS ORDERED SEPARATELY

SIZE	MAX BTU/HR
36" Linear Fire Table Burner*	90,000
3-10' Linear Fire Pit Burner*	30,000 (per foot)

\*AVAILABLE IN AUTOMATED OPERATION ONLY



LINEAR BURNER\*



SUB PANEL



9" ROCK BURNER

## ROCK BURNERS

Enjoy the allure of a fire element while maintaining a natural aesthetic with our rock burner inserts.

TRANSFORMERS ORDERED SEPARATELY FOR AUTOMATED BURNERS.

SEPARATE KEY VALVE RECOMMENDED FOR USE WITH MANUAL BURNERS.

SIZE	MAX BTU/HR
9" Rock Burner*	80,000
18" Rock Burner*	80,000

\*AVAILABLE IN AUTOMATED OR MANUAL OPERATION

### NOTE

1. Automated burners when used with propane require an additional safety valve (sold separately).
2. Commercial projects may require additional components.

# FIRE ACCENTS

Punctuate your backyard landscape with radiant accents. Our selection of ornate torches and Candeleres light up the night with blazing excitement and an enticing glow.

## CANDELERES

Pieced together using a beautiful marquetry inlay technique — handcrafted white quartz stone Candeleres from Grand Effects® illuminate outdoor designs. When lit with standard white LED lights, these elegant accent lights come alive with a majestic translucent radiance. Each Candelere includes a wall mount bracket or square Ebony Color Concrete Base.

- CSA Certified automated burner with SmartSense Technology
- Illuminated with white LED lights
- Lights and burners can be operated independently of one another with additional equipment
- Can be operated remotely from any home or pool automation system
- Wall or floor mounting (Wall mount extends 20")
- 6,500 BTU/hr



### SQUARE STONE CANDELERE

SHOWN WITH CONCRETE BASE

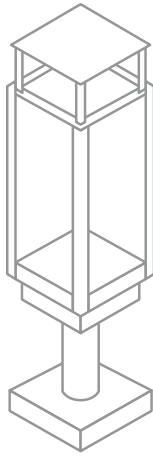
16.375" Sq. x 19.5" H



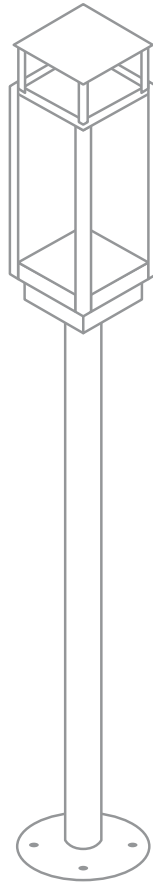
**AUTOMATION  
READY**  
See page 18.



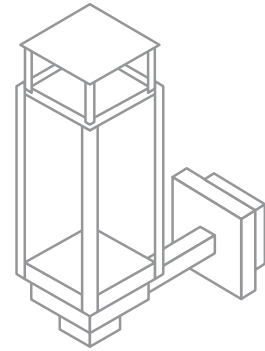
## MOUNTING OPTIONS FOR HELIX TORCH



Column



Post (Deck Mount)



Wall



## HELIX TORCH

BY TRAVIS

A beautiful combination of function and design, the Helix Torch incorporates Venturi technology to create a dramatic spiraling flame. High temperature glass panels provide a clear view of this captivating effect. The torch head is solidly constructed using all stainless-steel materials.

- CSA certified burner, available as automated or manual operation
- 3 Mounting types: Post (69" tall), Wall (17.5" extension) and Column (11" tall); mounting hardware included
- Natural gas or propane: 20,000 BTU/hr
- Pairs with a 24V transformer (40W required for each Helix Torch at startup) for up to 5 natural gas torches and up to 4 propane torches
- Torch head dimensions: 8.75" Sq. x 26" H



**AUTOMATION  
READY**  
See page 18.



# DECORATIVE FIRE MEDIA

## LAVA ROCK & CERAMIC STONE

For a more natural appearance, fill your fire feature with lava rock or ceramic stone — both artfully designed to withstand the heat and elevate your pool design.



**Tumbled Lava Rock**  
2-3" Pieces | Grey



**Lava Rock**  
2-5" Pieces | Black



**Ceramic Stone**  
3-4" Pieces | Black

## FIRE GLASS

Finish the look of your Grand Effects® natural gas fire feature with decorative and captivating Fire Glass.\*

\*GLASS MEDIA CANNOT BE USED WITH PROPANE GAS.

### STANDARD FIRE GLASS COLORS

AVAILABLE IN 1/2" TO 3/4" SIZES WITH NON-REFLECTIVE FINISH



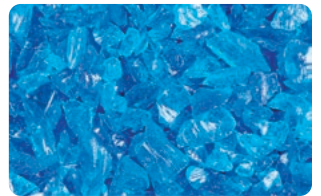
Black



Chestnut



Ocean Blue



Turquoise Blue

### REFLECTIVE FIRE GLASS COLORS

AVAILABLE IN 1/4" SIZE WITH REFLECTIVE FINISH



Black



Copper



Royal Blue



Blue Lagoon

# ACCESSORIES



CORINTHIAN BRUSHED COPPER FIRE & WATER BOWL ARTISAN SERIES EXTENDED LIP



## BOWL AND TABLE COVERS

Protect your Grand Effects® Fire Bowls and Fire Pits from the elements with a cover made from a breathable, weather-resistant laminated polyester exterior and a soft knitted liner.

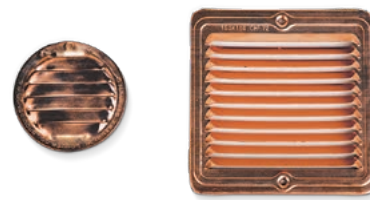
- Available color: Grey
- Covers available for bowls and tables in select round or square sizes

## VENT GRATES

For Fire Pit & Linear Inserts with site built enclosures



**Stainless Steel**  
5" Diameter | 5" W × 4.5" H



**Copper**  
3" Diameter | 5" W × 5" H

# WATER BOWLS

Create a mesmerizing sense of ambiance and tranquility in your backyard with exquisite cascading water bowls.

Choose from our classic collection of decorative bowls made from durable and weather-resistant premium concrete, copper, stainless steel or powder-coated metal.

• 15 GPM Water Flow

## PREMIUM CONCRETE WATER BOWLS



### CORINTHIAN

SHOWN IN EBONY

30" x 30" Sq. x 10" H x 16.25" B | 36" x 36" Sq. x 12" H x 19.25" B



### ESSEX

SHOWN IN CHARCOAL GREY

30" OD x 11" H x 10" B | 36" OD x 14" H x 11.6" B



### LEGACY

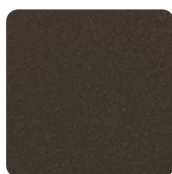
SHOWN IN STONE GREY

30" OD x 11" H x 15" B | 36" OD x 14" H x 17" B

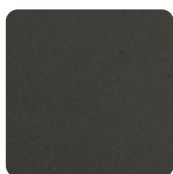
## FINISH COLORS



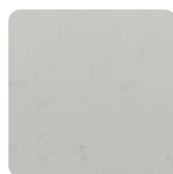
Ebony



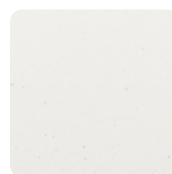
Dark Walnut



Charcoal Grey



Stone Grey



Natural



# METAL WATER BOWLS



CORINTHIAN SEAMLESS LIP WATER BOWL IN STAINLESS STEEL

## SEAMLESS LIP

SHOWN IN BRUSHED COPPER



## CORINTHIAN

24" x 24" Sq. x 7" H x 12" B  
 30" x 30" Sq. x 12" H x 15" B  
 36" x 36" Sq. x 16" H x 18" B

## ESSEX

24" OD x 7" H x 12" B  
 30" OD x 12" H x 15" B  
 36" OD x 16" H x 18" B



## EXTENDED LIP

SHOWN IN OIL-RUBBED  
 HAMMERED COPPER

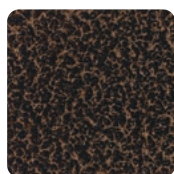
## FINISH COLORS



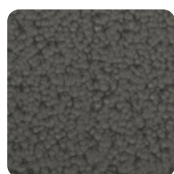
Black  
 Powder-Coated  
 Metal



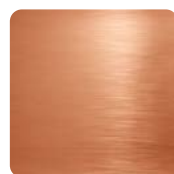
Bronze  
 Powder-Coated  
 Metal



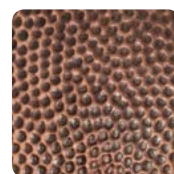
Chestnut  
 Hammertone  
 Powder-Coated  
 Metal



Grey  
 Hammertone  
 Powder-Coated  
 Metal



Brushed  
 Copper

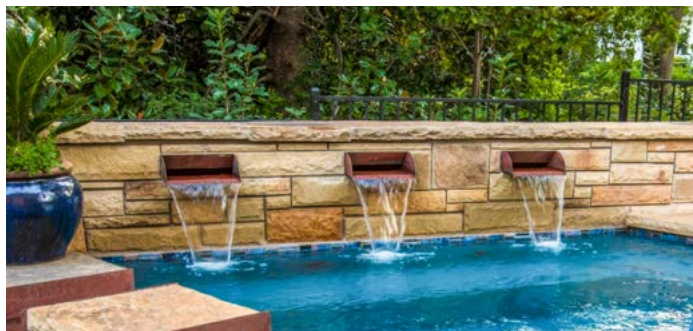


Oil-Rubbed  
 Hammered  
 Copper



Stainless  
 Steel  
 Not recommended for  
 saltwater pools

# SCUPPERS



COPPER SMOOTH FLOW RADIUS SCUPPERS

Scuppers create a whole new sense of design and style in a pool. This is a water feature that is designed to be seen!

Grand Effects® has the most complete and advanced line of scuppers available, made with the highest quality construction and materials.

- Constructed with heavy gauge materials
- All seams are fully welded and fully polished
- Available in Brushed Copper, Oil-Rubbed Hammered Copper, Stainless Steel and Powder-Coated options. Select models may have limited material/finish options. Visit [GrandEffects.com](http://GrandEffects.com) for more info.



**Smooth Flow**  
25-30 GPM  
7", 9" L x 4" H  
W: 8", 12", 18", 24", 36", 48"



**U-Shape**  
15-20 GPM  
12" L x 6" H  
W: 6", 8", 10", 12"



**Smooth Flow Radius**  
25-30 GPM  
13.5" L x 7" H  
W: 6", 8", 12", 24", 36", 48"



**Tunnel**  
15-20 GPM  
12" L  
Dia: 1.5", 2", 3"

Round, Square, and Pointed Escutcheon options available in stainless steel and brushed copper



**Radius**  
15-20 GPM  
8" L x 4" H  
W: 6", 8", 12", 24"



**Cannon**  
15-20 GPM  
15" L x 5" H (12" L spout)  
W: 1.5", 2", 3"

Round, Square, and Pointed Escutcheon options available in stainless steel and brushed copper



**Box**  
15-20 GPM  
8" L  
H x W: 2" x 2", 4" x 4", 6" x 6"

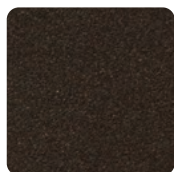


**Square Tunnel**  
15-20 GPM  
12" L  
Dia: 1.5", 2", 3"

## FINISH COLORS



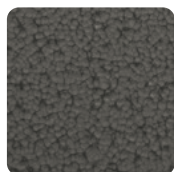
**Black**  
Powder-Coated  
Metal



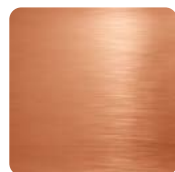
**Bronze**  
Powder-Coated  
Metal



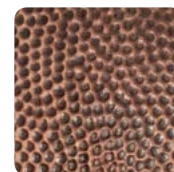
**Chestnut**  
Hammertone  
Powder-Coated  
Metal



**Grey**  
Hammertone  
Powder-Coated  
Metal



**Brushed**  
Copper



**Oil-Rubbed**  
Hammered  
Copper



**Stainless**  
Steel  
Not recommended for  
saltwater pools





## SCUPPER SPECIFICATIONS

- Bonding: All scuppers come with a bonding lug on the back.
- Leveling: Scuppers should be installed 1/8" off level in the front. The scupper should be "pointed" down to the pool. This allows the water to flow off the lip and reduces spill back and a "wet" wall.
- All scuppers have a 1.5" NPT female back port threaded inlet (one inlet per foot of spillway). Select models available with bottom inlet.
- Bond Beam: Install either into the beam or on top. If installing in the beam, notch out 1" around the scupper to assist with leveling.

Stainless Steel not recommended for saltwater pools





# WATERFALLS

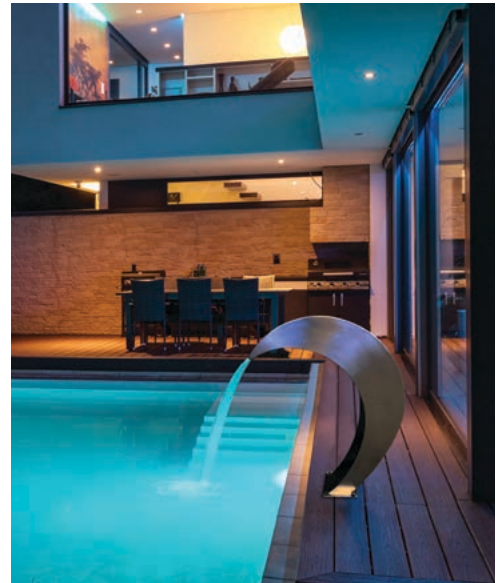
From lustrous waterfalls and tranquil rain features, Grand Effects® Water Elements are made to be seen and heard.

## FREESTANDING DECK-MOUNTED WATERFALLS

Relax and unwind to the rhythmic rush of an elegant and modern waterfall perched atop your pool deck with a sculptural stainless-steel spout.\* Offered in multiple shapes to perfectly enhance your pool design, this stainless-steel deck-mounted pool waterfall ensures a magnificent and relaxing experience.

- 316 Stainless Steel\*
- Easily seated onto stainless-steel mounting bracket
- Mounting bracket inlet: 1.5" (bracket included)

\*Stainless Steel not recommended for saltwater pools



AURA FREESTANDING WATERFALL



### **Aura**

Aura 14  
18" H x 14" W x 18" D  
53 GPM

### Aura 20

18" H x 20" W x 18" D  
80 GPM



### **Escala**

29" H x 19" W x 18" D  
62 GPM



### **Cambré**

36" H x 27" W x 33" D  
150 GPM



### **Moderno**

28" H x 19" W x 19" D  
44 GPM



**Pure Flow**  
4 1/4" H x 12-48" W x 6 1/8" D

## PURE FLOW™ WATERFALL

Meticulously crafted from heavy-duty marine-grade stainless steel\*, this masterpiece guarantees durability and strength without compromise. Say goodbye to concerns of warping or caving, as our Pure Flow waterfall is built to withstand the test of time. Designed to operate based on pressure, it effortlessly produces a mesmerizing water flow, creating a gorgeously thick sheet of water that gracefully cascades into your pool. Experience the awe-inspiring beauty, tranquility, and captivating ambiance as the Pure Flow waterfall becomes the centerpiece of your pool oasis.

- Projection up to 3'
- No Warping or Caving
- Available in 12", 18", 24", 36" and 48" lengths
- 2" and 4" Lips available

\*Not recommended for saltwater pools. For salt pools use Jandy Sheer Decent® Cascade Waterfall



## RAIN FEATURE

Create a peaceful, soothing sound that emulates natural rainfall. Rain Features are made of Copper or Stainless Steel\* and are available in linear one-foot increments from 4'-10'.

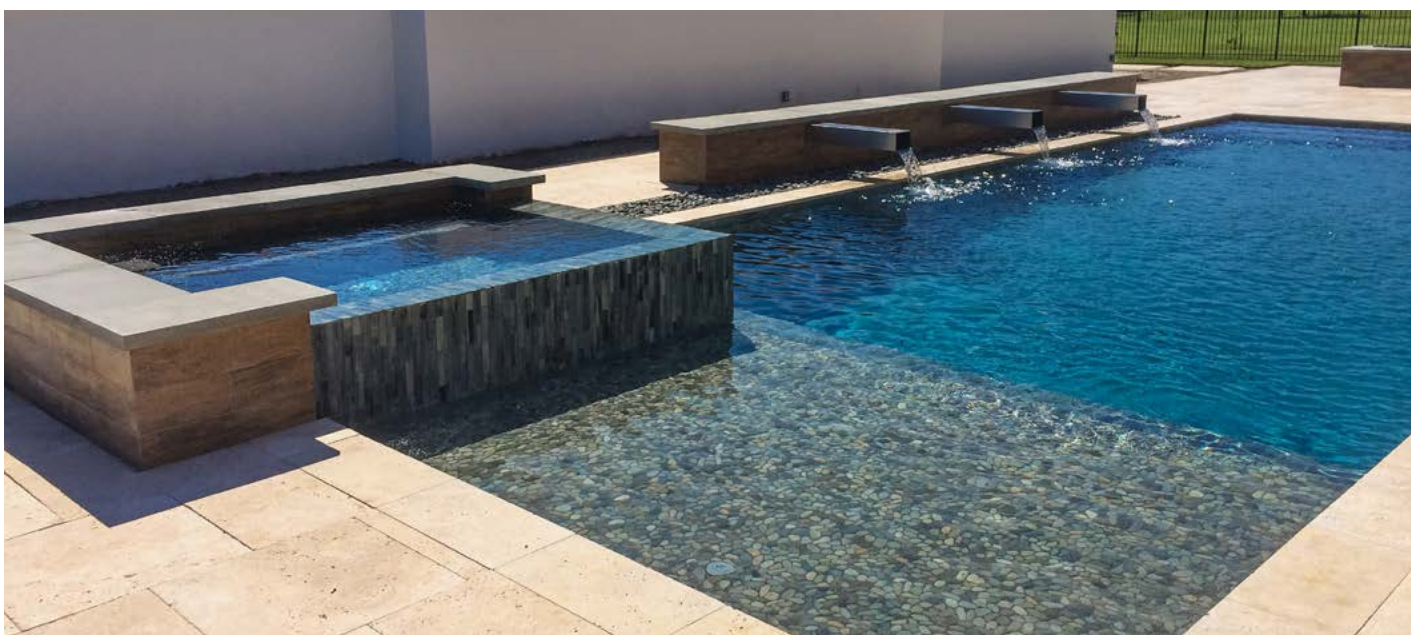
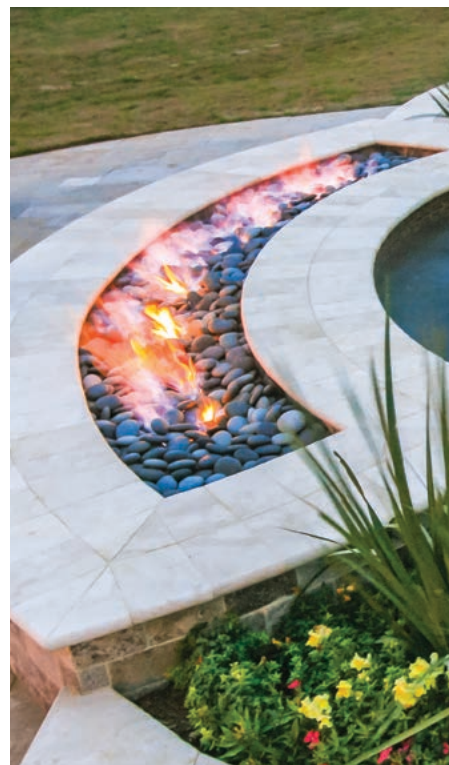
- Custom length and curve options are available.
- Flow Rate: 5-10 GPM per foot (example 48" = 20-40gpm)

\*Stainless Steel not recommended for saltwater pools



# CUSTOM PROJECTS

At Grand Effects®, our talent is innovation, design and fabrication. Our custom design center is dedicated to commercial and residential jobs that desire a specific look. If you require modifications to an existing Grand Effects metal product, contact us and let us know what you have in mind!







# TERMS & CONDITIONS

## WARRANTY POLICY

1-Year standard limited warranty on all products. Small superficial cracks and surface crazing are a natural occurrence in concrete and are not covered by warranty.

## CUSTOM PRODUCTS

Some custom-made products are available, however, they have a no return policy.

## ORDER CANCELLATION

A 15% restocking fee will be charged for cancellation of product orders.

## FREIGHT DAMAGE POLICY

Immediately inspect shipment for any damages when received. Notification is required of any damages within 5 days. Cover-Pools LLC is not responsible for damages after 5 days.

## LEAD TIMES

Lead times can vary based on product, finish and delivery requirements.

Please contact us for more information.

## COMMERCIAL JOBS

Commercial jobs require additional safety equipment. Please call for a quote.

## TERMS

Full payment required before shipment.

## PAYMENT

Check, MasterCard, Visa, American Express

For checks, mail payment to:

Cover-Pools LLC

2580 Decker Lake Boulevard, Suite 300

West Valley City, UT 84119

Additional terms and conditions shall apply. Please contact us for full details.

## CONTACT INFORMATION

Phone 1.949.697.5270

Fax 1.949.625.8027

Email [grandeffects.info@fluidra.com](mailto:grandeffects.info@fluidra.com)

Web [GrandEffects.com](http://GrandEffects.com)







A Fluidra Brand | GrandEffects.com | 1.949.697.5270

©2025 Fluidra. All rights reserved. The trademarks and trade names used herein are the property of their respective owners. 61505\_SA

